

Model GFD

Diesel Engine Fire Pump Controllers

Built to NFPA 20

Standard Features

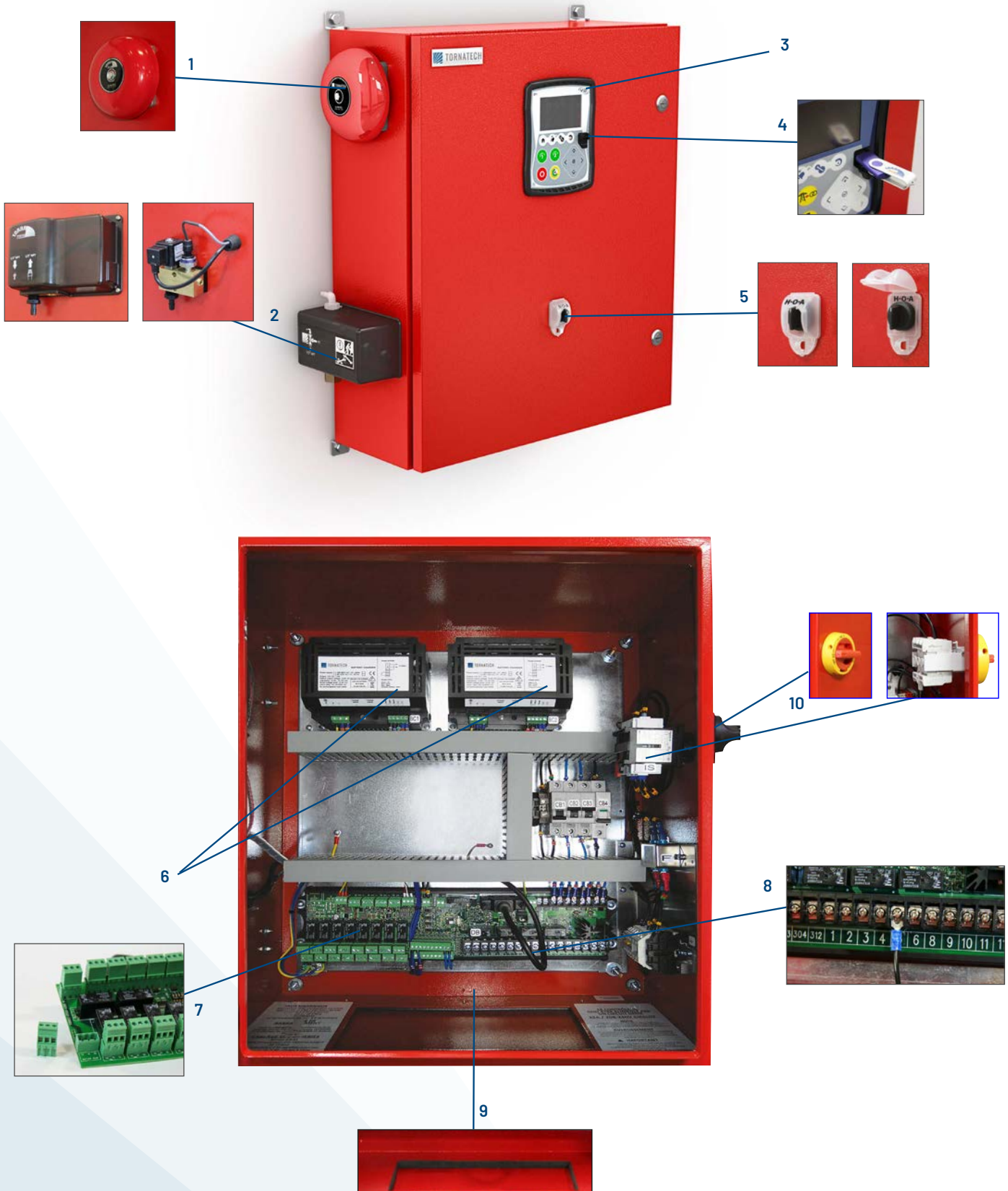
- ViZiTouch Light operator interface
- IP55 enclosure
- Pressure and event recorder
- Battery voltage and amperage display
- Run Test push button
- HAND - OFF - AUTO selector switch
- Manual crank pushbuttons (2)
- Stop pushbutton
- Remote start / deluge valve start provision
- Pressure transducer and run test solenoid valve externally mounted
- Gland plate
- Audible alarm
- Alarm contacts for remote indication
- Weekly exercise programmable time clock
- Crank cycle
- Programmable automatic shutdown (minimum run timer)
- Programmable sequential start timer (delay start timer)



CE	Built in Canada	Built in Europe	Built in UAE
	Optional	Standard	Optional



1. Alarm bell
2. Externally mounted pressure transducer and run test solenoid valve with protective cover
3. ViZiTouch Light operator interface
4. USB port exterior (Interior USB port also supplied)
5. HAND-OFF-AUTO selector switch
6. Battery chargers
7. Remote alarm contacts with removable terminals
8. Automotive type engine connections
9. Gland plate
10. AC isolating switch

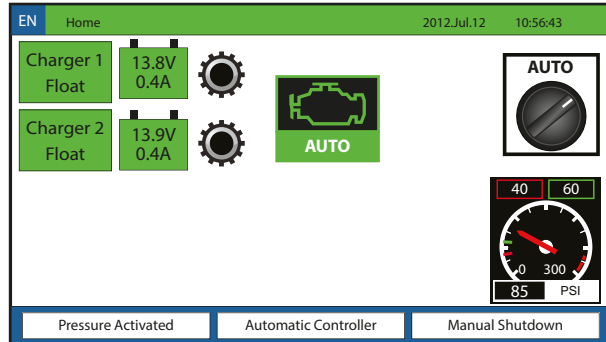




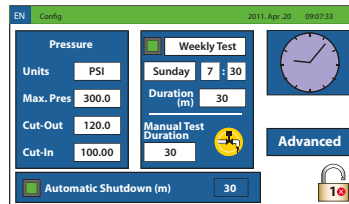
ViZiTouch Light operator interface



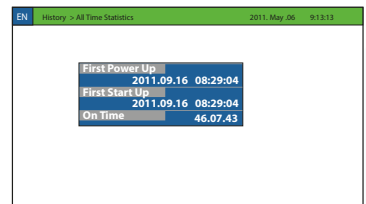
HOME



SETTINGS



HISTORY/STATISTICS



VIZITOUCH LIGHT OPERATOR INTERFACE

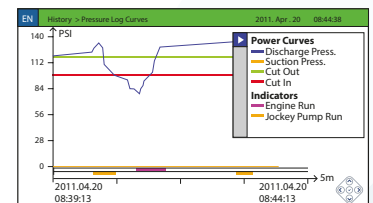
- 4.2" color Touch screen
- Expandable storage
- Multi-language
- Upgradable software
- Password protected

EVENTS

EN History - Events Log 2011.Apr.20 08:50:17

Date	Time	Message
2011.04.14	16:36:34	Engine Trouble RTN
2011.04.14	16:36:33	Engine High Coolant Temp ACT
2011.04.14	16:36:33	Engine Trouble ACT
2011.04.14	16:36:20	Engine Started 0
2011.04.14	16:35:29	HOA in AUTO position
2011.04.14	16:35:27	Engine Stopped
2011.04.14	16:35:03	Engine Started 0
2011.04.14	16:34:53	HOA in OFF/MANUAL position
2011.04.14	16:34:53	HOA in AUTO position
2011.04.14	16:34:43	HOA in OFF/MANUAL position

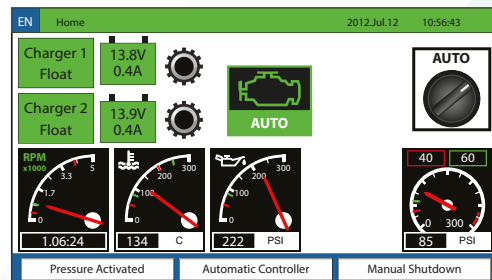
PRESSURE CURVES



OPTION I01 - DIGITAL ENGINE GAUGES

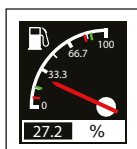
- For engines without gauge panel. Senders to be supplied on engine by others.
- Complete with:
 - Tachometer (RPM)
 - Integrated speed switch
 - Field calibrated
 - Field adjustable low (run) and high (overspeed) settings
 - Test and reset button
 - Coolant Temperature (selectable °F or °C)
 - Oil Pressure (selectable PSI, kPA or bar)

GAUGE OPTIONS



OPTION I02 - FUEL LEVEL GAUGE

- Fuel level (%)



MODEL GFD

WEIGHTS & DIMENSIONS

Wall Mount	
Dimensions mm	Approx. Shipping Weight kg
700 x 600 x 228	34

HOW TO ORDER: GFD - 12 or 24 VDC - 220VAC - Options

Ex.: GFD - 12 - 220 - C7

AMERICAS

Tornatech Inc.

Head Office

Laval, Québec, Canada

Tel: +1 514 334 0523

Toll free: +1 800 363 8448

EUROPE

Tornatech Europe SPRL

Wavre, Belgium

Tel: +32 (0) 10 84 40 01

MIDDLE EAST

Tornatech FZE

Dubai, United Arab Emirates

Tel: +971 (0) 4 821 7555

ASIA

Tornatech Pte Ltd.

Singapore

Tel: +65 6795 8114

Tel: +65 6795 7823